



GOLDENSUN

[www.ptgoldensun.com](http://www.ptgoldensun.com)

## LASER CUTTING

LC1325

Wide area laser cutting for non-metal material



# LASER CUTTING

Wide area  
Non-metal

Mesin laser cutting berarea lebar (LC1325, LC1830 dan LC2030) menggunakan struktur terbuka untuk akses mudah ke material. Area kerja yang lebar membuat pengguna mampu memotong material dengan pattern yang paling efisien. Mesin juga dilengkapi dengan persisten memori untuk melanjutkan pengerjaan setelah listrik mati. Walaupun dimaksimalkan untuk pemotongan, mesin area lebar mampu menggrafir dengan detail yang bagus.

Mesin ini biasa digunakan oleh industri yang memerlukan pemotongan area besar seperti pemotongan papan besar dan kain lebar seperti pada industri pertahanan.

Mesin laser cutting berarea lebar mampu memotong material organik seperti akrilik, kayu, MDF, tripek, kulit, kain, dan material non logam lainnya.

The wide area laser cutting (LC1325, LC1830 and LC2030) employs open structure for easy access to the material. The larger cutting area enables user to cut the material at most efficient cutting pattern. The machine is also equipped with persistent memory to save the working state of the machine in case of blackout occurs.

While this machine mostly used for cutting, the wide area laser cutting also capable of engraving fine details.

This machine is used for industries that requires large cutting area such as cutting whole sized boards and fabrics in defense industries.

The wide area machine are capable of cutting organic material such as acrylic, wood, particle board, leather, fabrics and many more non metal applications.



LC1325



LC1830



LC2030

tipe mesin machine type	LC1325	LC1830	LC2030
jenis laser laser source	tabung laser CO <sub>2</sub> Longlife CO <sub>2</sub> Longlife laser tube		
kekuatan laser laser output	80W (optional 100W, 120W dan 150W) 80W (optional 100W, 120W and 150W)		
area kerja (mm) working area (mm)	1300x2500 1300x2500	1800x3000 1600x2500	2000x3000 2000x3000
kecepatan ( X axis ) speed ( X axis )	0 - 400 mm/detik 0 - 400 mm/sec		
ketepatan potongan cutting accuracy	0,1 mm 0,1 mm		
ukuran huruf minimum font size	Inggris 1x1 mm English 1x1 mm		
software compatible software	Corel Draw, Auto CAD, Adobe Illustrator Corel Draw, Auto CAD, Adobe Illustrator		
format penyimpanan storage format	BMP, PLT, DXF, DST, AI BMP, PLT, DXF, DST, AI		
sistem pengendali control system	DSP dan Hybrid Drive Stepper DSP and Hybrid Drive Stepper		
kebutuhan daya power requirements	2.000W @ AC 110-220V 10% 50-60Hz 2.000W @ AC 110-220V 10% 50-60Hz		
lingkungan kerja working environment	0 - 45°C, RH 5 - 95% 0 - 45°C, RH 5 - 95%		
pendingin cooling system	sistem pendingin air water cooling		
pembuangan exhaust system	kipas dan pipa pembuangan udara exhaust fans and air exhaust pipe		
meja kerja working table	honeycomb dengan vakum atau batang honeycomb with vacuum or blade		
pengolihan sentral centralised lubrication	standard standard		
optik optics	lensa Amerika dengan manual fokus American lens with manual focus		
memori persisten persistent memory	standard standard		
anti gosong antiburn	optional optional		



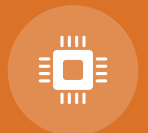
longlife  
tube



intelligent  
power supply



manual focus  
American lens



persistent  
memory



3ph step motor  
with hybrid drive

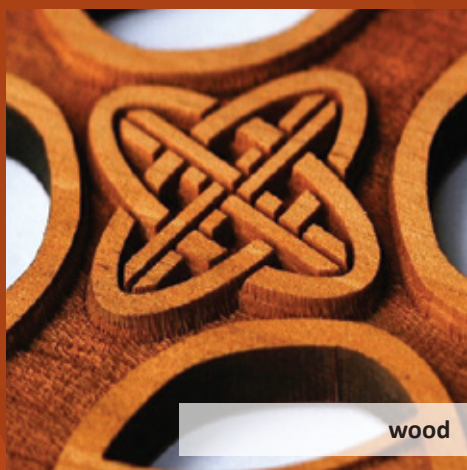
#### Why PT Golden Sun Indonesia?

- A one-year warranty for the machine and parts.
- A six-month warranty for the tube - the longest on the market
- Cloud driver backup service

## PRODUCT SAMPLES



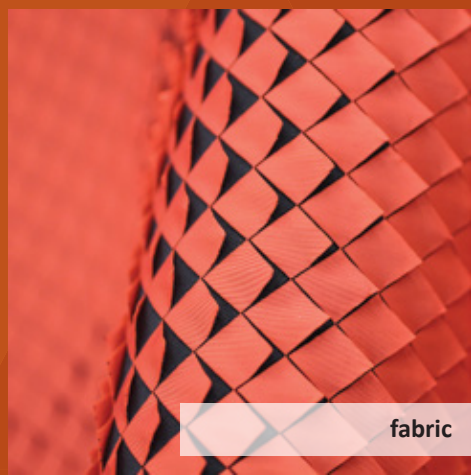
acrylic



wood



anodised aluminium



fabric



paper



MDF

## TABLEPOWER

laser tube	W2 Longlife Laser Tube 10.000 jam		
material	akrilik	*MDF	*triplek
ketebalan potong	20 mm	8 mm	14 mm
kekuatan rating	80 Watt		
kekuatan maksimal	100 Watt		
panjang	1200 mm		
diameter	80 mm		

laser tube	W6 Longlife Laser Tube 10.000 jam				
material	akrilik	*MDF	*triplek	stainless steel	carbon steel
ketebalan potong	25 mm	15 mm	22 mm	1,5 mm	1,5 mm
kekuatan rating	130 Watt				
kekuatan maksimal	160 Watt				
panjang	1650 mm				
diameter	80 mm				

laser tube	W4 Longlife Laser Tube 10.000 jam		
material	akrilik	*MDF	*triplek
ketebalan potong	20 mm	8 mm	18 mm
kekuatan rating	100 Watt		
kekuatan maksimal	130 Watt		
panjang	1400 mm		
diameter	80 mm		

laser tube	W8 Longlife Laser Tube 10.000 jam				
material	akrilik	*MDF	*triplek	stainless steel	carbon steel
ketebalan potong	30 mm	18 mm	22 mm	1,5 mm	1,5 mm
kekuatan rating	150 Watt				
kekuatan maksimal	180 Watt				
panjang	1850 mm				
diameter	80 mm				



GOLDENSUN

Contact us at:

+62 21 2931 5299

marketing@ptgoldensun.com

ptgoldensun.com

Ruko Glaze II Blok D no 32 Gading Serpong, Tangerang - Indonesia 15480

