

PRODUCT SAMPLES



metal



metal



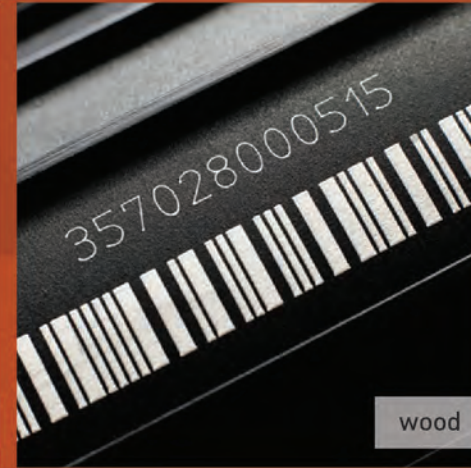
metal



wood



wood



wood

TABLE POWER

laser tube	Z2 Longlife Laser Tube 10.000 jam			laser tube	Z6 Longlife Laser Tube 10.000 jam				
material	akrilik	*MDF	*triplek	material	akrilik	*MDF	*triplek	stainless steel	carbon steel
ketebalan potong	20 mm	8 mm	14 mm	ketebalan potong	25 mm	15 mm	22 mm	1,5 mm	1,5 mm
kekuatan rating	80 Watt			kekuatan rating	130 Watt				
kekuatan maksimal	100 Watt			kekuatan maksimal	160 Watt				
panjang	1200 mm			panjang	1650 mm				
diameter	80 mm			diameter	80 mm				

laser tube	Z4 Longlife Laser Tube 10.000 jam			laser tube	Z8 Longlife Laser Tube 10.000 jam				
material	akrilik	*MDF	*triplek	material	akrilik	*MDF	*triplek	stainless steel	carbon steel
ketebalan potong	20 mm	8 mm	18 mm	ketebalan potong	30 mm	18 mm	22 mm	1,5 mm	1,5 mm
kekuatan rating	100 Watt			kekuatan rating	150 Watt				
kekuatan maksimal	130 Watt			kekuatan maksimal	180 Watt				
panjang	1400 mm			panjang	1850 mm				
diameter	80 mm			diameter	80 mm				



LASER MARKING

DM50

Laser marking for metal material



Contact us at:
 ☎ +62 21 2931 5299 | ✉ marketing@ptgoldensun.com | 🌐 ptgoldensun.com

Ruko Glaze II Blok D no 32 Gading Serpong, Tangerang - Indonesia 15480
 Jl. Sawunggalih no 18 Magelang, Jawa Tengah - Indonesia 56122

LASER MARKING Metal

DM50 • LF20

LASER MARKING

Metal

Mesin tipe DM50 dan FL20 menggunakan teknologi YAG untuk marking banyak jenis metal dan material organik membuatnya cocok digunakan untuk marking pada IC, kunci kontainer, jam, frame kacamata, kacing plastik, peralatan medis, pipa PVC, handphone dan elektronik.

Redlight pointer untuk memudahkan penempatan material, automatic coding dan bar code sebagai standar. Plus mesin ini bisa bekerja pada sistem konveyor.

Metal Laser Marking bisa marking kebanyakan jenis metal seperti besi, baja, aluminium, titanium, karet, plastik ABS, kulit, kain.

DM50 and FL20 utilises YAG technology to enables the machine marks many kinds of metals and organic materials which made DM50 and FL20 prefect for marking IC, Container seal, watch, glasses frames, plastic bags, medical equipment, PVC pipe, mobile phone and electronics.

Red light pointer for easy positioning and automatic coding and bar coding are standard. Moreover DM50 and FL20 can be attached to work in a conveyor system.

DM50 and FL20 can mark most metals like iron, steel, aluminium, titanium, rubber, ABS plastic, leather and fabrics.



DM50



LF20

tipe mesin machine type	DM50	LF20
jenis laser laser source	Diode Pump Diode Pump	Ytterbium Fibre Ytterbium Fibre
kekuatan laser laser output	50W 50W	20W 20W
area kerja (mm) working area (mm)	100x100, 200x200 100x100, 200x200	100x100 100x100
frekuensi repetisi repetitions frequency	30.000 Hz 30.000 Hz	20.000-80.000 Hz 20.000-80.000 Hz
lebar garis minimum minimum line width		0,015 mm 0,015 mm
panjang gelombang wavelength	1.064 nm 1.064 nm	1.060 - 1.070 nm 1.060 - 1.070 nm
kualitas beam m ² beam quality m2		<6 <6
energi per pulse energy per pulse	5 mJ 5 mJ	1 mJ 1 mJ
kedalaman marking marking depth	0,3 mm 0,3 mm	0,05 mm 0,05 mm
sistem pengendali control system		Q Switch Q Switch
format penyimpanan storage format		BMP, PLT, DXF, DST, AI BMP, PLT, DXF, DST, AI
antarmuka interface		USB USB
software compatible software		Windows XP dan EZCAD Marker System Windows XP dan EZCAD Marker System
kebutuhan daya power requirements		2.500W @ AC 110-220V 10% 50-60Hz 2.500W @ AC 110-220V 10% 50-60Hz
lingkungan kerja working environment		5 - 35°C, RH 10 - 85% 5 - 35°C, RH 10 - 85%
pendingin cooling system	pendingin air dan chiller water cooled and chiller	pendingin udara air cooled
warna marking resulting colour	gelap dark	terang bright
usia sumber laser laser source lifespan	2 tahun 2 years	7 tahun 7 years

LF20



100.000 hours
lifetime



working area:
(optional)
100 x 100 mm
200 x 200 mm
300 x 300 mm

Why PT Golden Sun Indonesia?

- A two-year warranty for the machine and parts.
- A six-month warranty for the tube - the longest on the market
- Cloud driver backup service